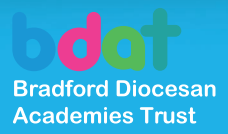
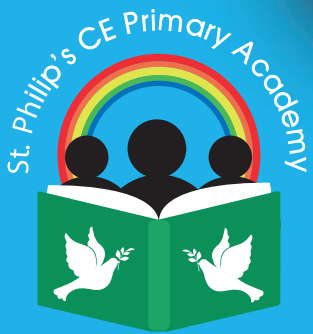


ST PHILIP'S CE PRIMARY ACADEMY PROSPECTUS



Let your light shine before,
that they may see your
good works and glorify
your Father in Heaven

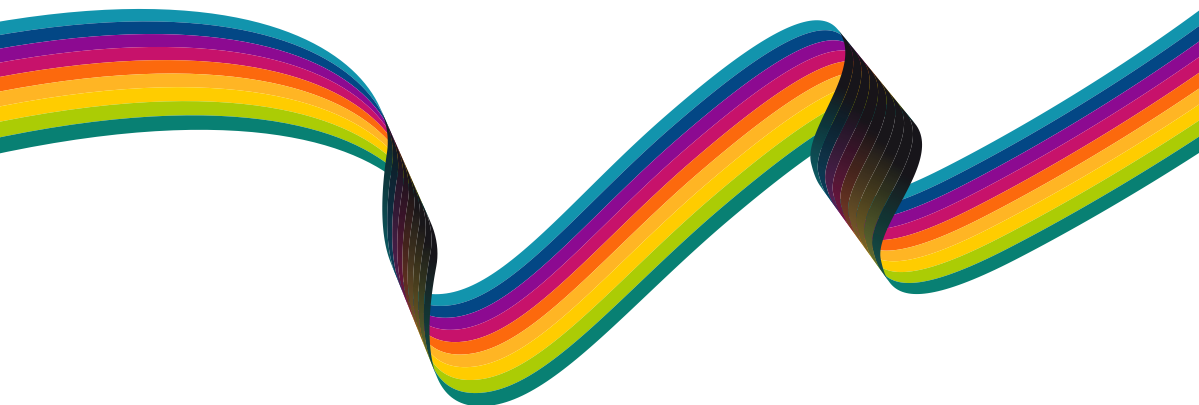
Matthew 5:16



At St Philip's Primary Academy, we pride ourselves on developing a positive ethos built on the foundations of the Christian faith, whilst taking into consideration that most of our pupils, staff and community follow the faith of Islam.

We endeavour to ensure we are always **'Working together with hope in our hearts'**

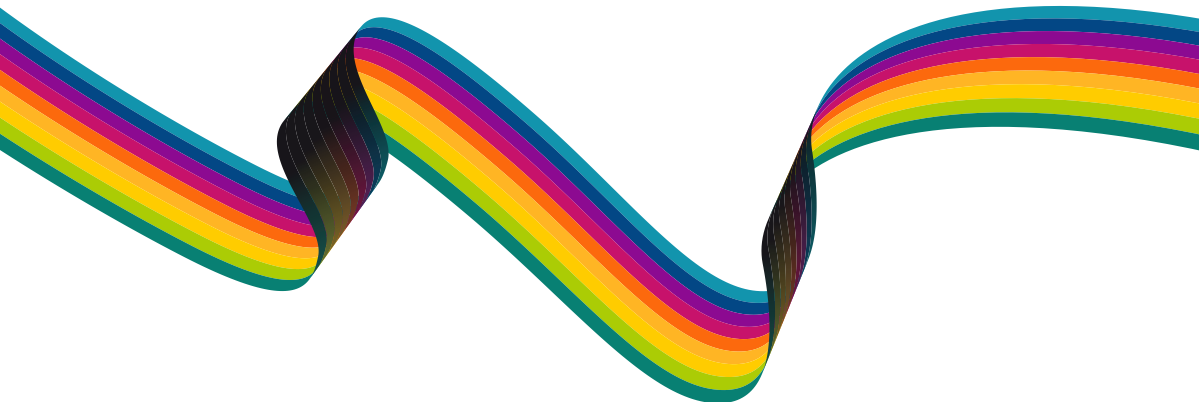
This ethos is based on the following principles that, as stakeholders, we all aim to uphold: **NOAHSARK:**





NURTURING

We demonstrate **kindness** and **caring** towards each other so that we can find **happiness** and **fulfilment**. We promote and support children's **wellbeing** to support their **growth** and development.





OPTIMISTIC

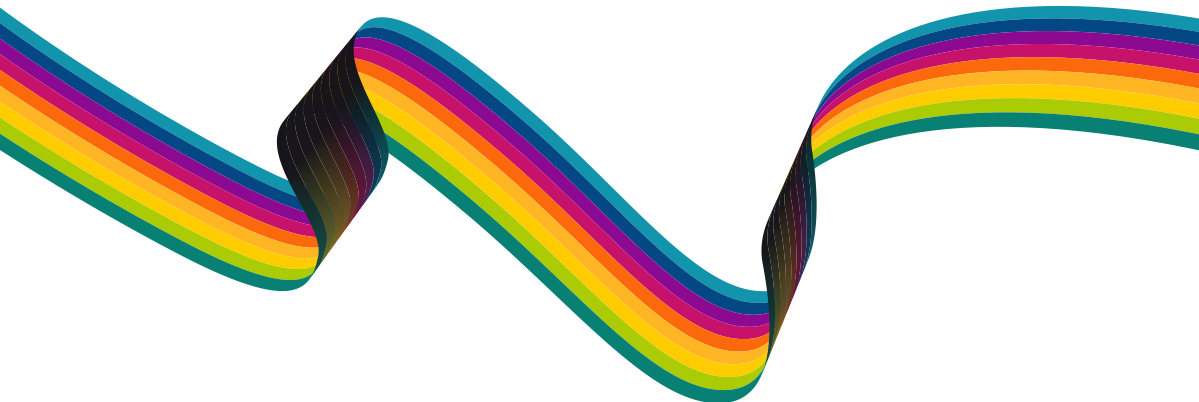
We believe that having a **positive attitude** towards situations enables us to be forward thinking and supports us in our goal of providing a good and better education for all of our pupils.

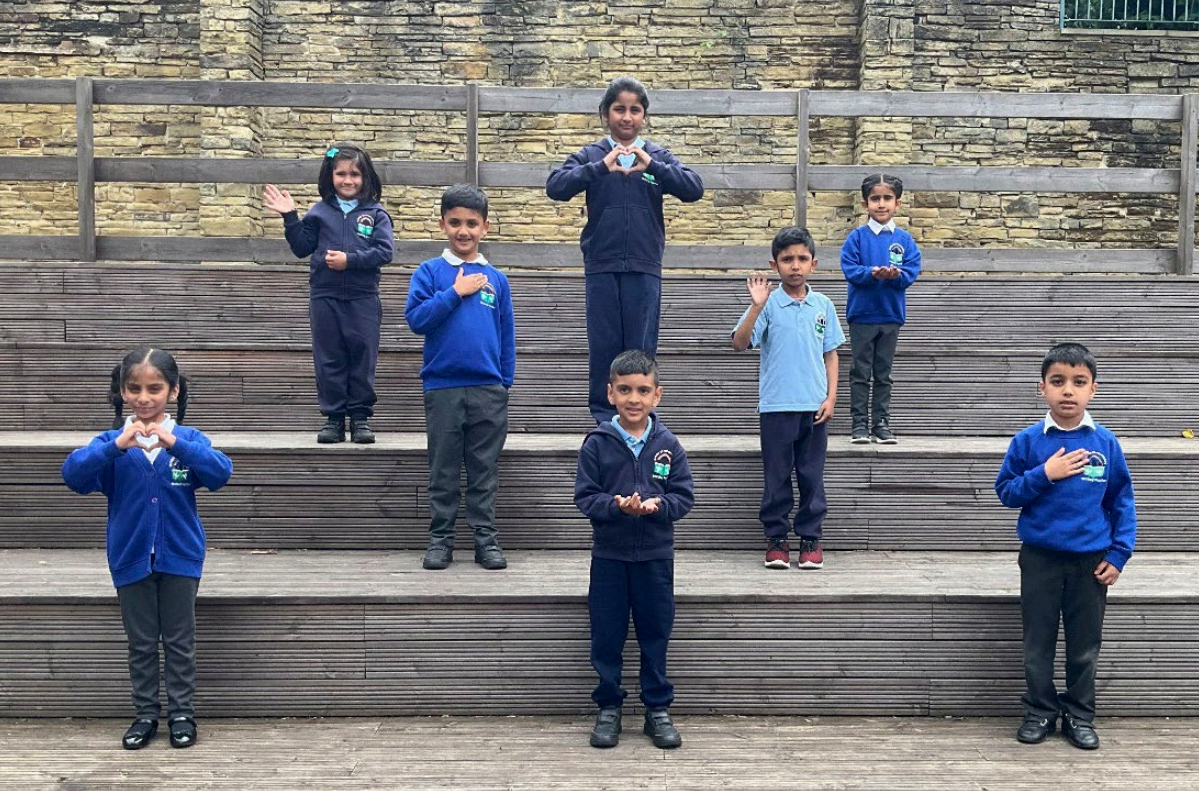




ASPIRATIONAL

We have **high aspirations** for the futures of the children in our Academy. Through a high-quality curriculum and planning of lessons that are specifically tailored for our pupils, they will have the opportunity to achieve and **surpass** their **potential**.





HOPEFUL

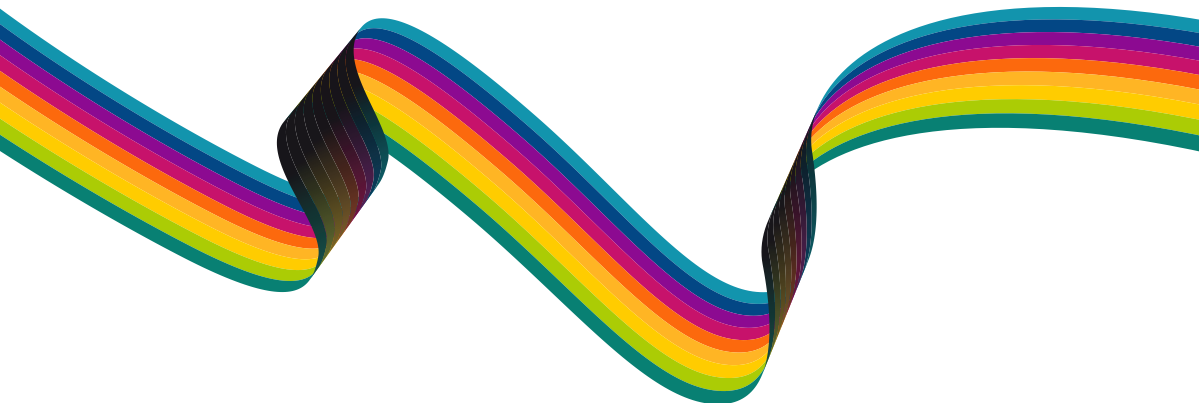
Hopeful - The value of **hope** is interwoven into our teaching and is an expression of our faith. Hope supports our spirituality, and through that, virtues such as **forgiveness**, **empathy** and **compassion** come to the fore.





SINCERE

We are united as a whole to ensure **integrity, honesty** and **trust** are maintained. This quality within our academy means that we follow our values to ensure that we always do our best for pupils, staff and community.





ASSURED

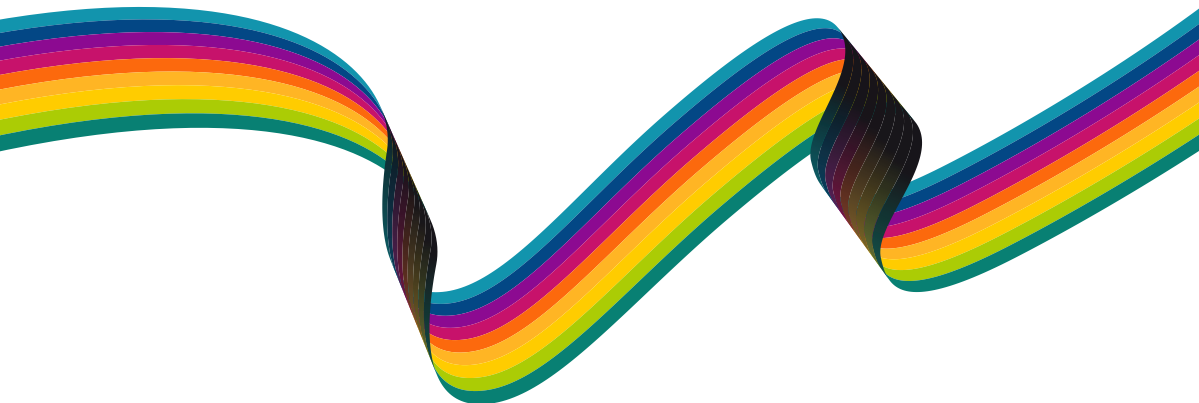
Our goal is to see our pupils **confident**, armed with **independence** and **conviction**, echoing 'Let your light shine' - Matthew 5:16





RESPECTFUL

All members of our academy, including pupils, staff, governors, visitors and the wider community, should be treated with respect. We hold **politeness** in high regard and we are **accepting** of each individual's **uniqueness**.

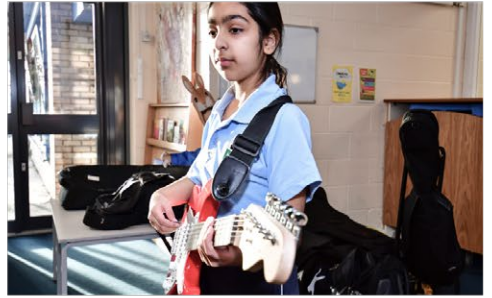




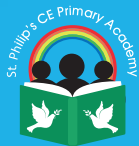
KNOWLEDGEABLE

By fostering **resilience, collaboration** and **risk-taking**, we craft an environment where pupils are ready to be **lifelong learners**.









Whitby Terrace, Bradford, BD8 9JL
Tel: 01274 546496
Email: office@stphilips.bdat-academies.org